



MEMO

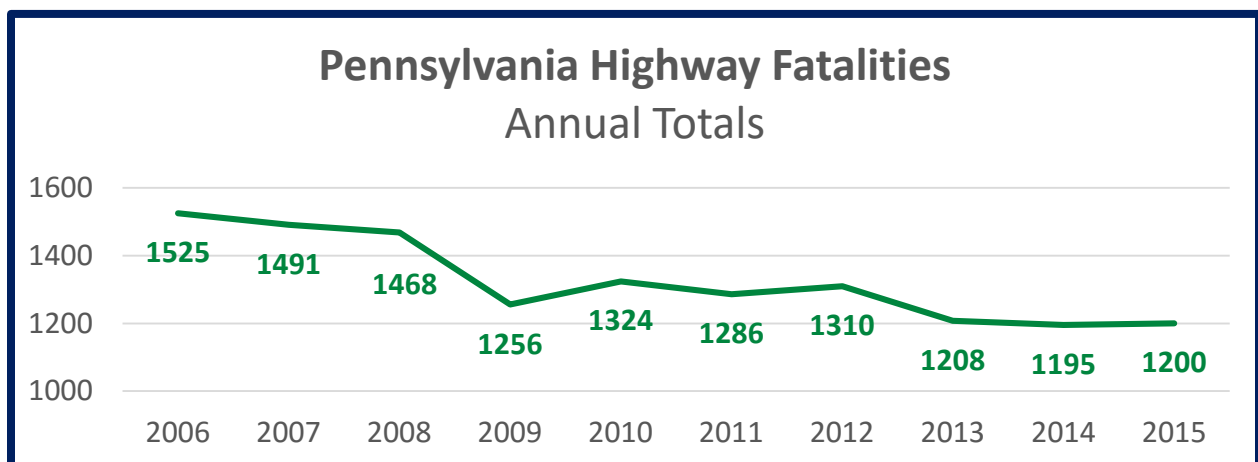
DATE: April 12, 2016

SUBJECT: Analysis of State Crash Trends

TO: AASHTO SCOHTS

FROM: Gavin E. Gray, P.E.

Currently, Pennsylvania has not observed the same trends that have recently occurred nationally relative to fatalities. Generally speaking Pennsylvania has continued to observe a downward trend in our fatalities. However, over the last 3 years we have seen that the rate of decline has leveled out.



We have not yet done a detailed analysis of all the data but we will be performing that analysis as part of our 2016 Strategic Highway Safety Plan. We do know that following focus areas observed increases in 2015 (reference attached data):

- **Reducing Impaired (DUI) Driving** – 306 Fatalities
- Local Road Safety – 233 Fatalities
- **Increased Seatbelt Usage** – 413 Fatalities
- **Infrastructure Improvements** – 580 Fatalities
- **Mature Driver Safety** – 279 Fatalities
- **Reducing Distracted Driving** – 66 Fatalities
- Vehicle Failure – 69 Fatalities

It is worth noting that the 5 bold areas were also identified as focus areas in our 2012 Strategic Highway Safety Plan.

Statewide Fatality Statistics

	1997	1998	1999	2000	2001	2002	2003	2004	2005	2006	2007	2008	2009	2010	2011	2012	2013	2014	2015	Change
Total Fatalities	1562	1486	1549	1520	1531	1618	1577	1490	1616	1525	1,491	1,468	1,256	1,324	1,286	1,310	1,208	1,195	1,200	5
Unrestrained Fatalities (Pass. Cars, Lt Trks, Hvy Trks, Vans, SUVs)	707	623	653	622	590	719	623	577	648	611	559	567	451	524	509	503	425	383	413	30
Pedestrian Fatalities	175	166	187	172	195	159	175	151	162	171	155	142	136	148	149	168	151	166	153	-13
Motorcyclist Fatalities	92	111	111	150	132	134	156	158	205	187	225	236	204	223	199	210	181	186	179	-7
Bicyclist Fatalities	17	23	18	15	13	22	20	14	18	13	20	9	16	21	11	16	11	19	16	-3
Fatalities in Alcohol-Related Crashes	518	542	532	553	544	602	559	542	582	544	525	531	442	444	425	402	369	326	337	11
Fatalities in Drinking Driver Crashes	493	521	505	526	519	573	527	512	549	509	499	512	408	417	391	377	342	294	306	12
Fatalities in Speeding Crashes	281	204	218	202	224	284	270	252	326	322	385	261	231	284	267	262	193	190	177	-13
Fatalities in Distracted Driver Crashes	37	28	31	33	25	70	52	73	81	78	72	59	65	66	59	57	64	55	66	11
Fatalities in Heavy Truck Crashes	203	186	234	183	179	157	214	184	187	191	194	184	136	156	155	159	148	151	146	-5
Fatalities in Aggressive Driving Crashes						177	175	190	203	212	192	141	130	168	168	191	145	134	119	-15
Fatalities in Single Vehicle Run-Off-the-Road Crashes	664	666	695	694	684	784	763	701	775	762	726	761	601	665	648	648	566	534	580	46
Fatalities in Hit Fixed Object Crashes	576	573	590	609	600	665	646	599	656	643	594	630	511	553	529	533	467	425	459	34
Fatalities in Hit Tree Crashes	290	337	332	368	316	363	319	309	326	348	289	319	253	295	252	267	254	221	240	19
Fatalities in Hit Utility Pole Crashes	199	178	174	190	181	151	143	153	168	164	133	154	117	127	121	118	103	113	111	-2
Fatalities in Hit Guiderail Crashes	178	167	182	152	137	157	184	144	186	139	183	178	149	133	162	137	116	111	113	2
Fatalities in Head-on / Opposite Direction Side Swipe Crashes	344	283	286	286	269	317	297	247	205	203	181	160	177	175	156	148	178	151	176	25
Fatalities in Cross Median Crashes	120	101	111	115	96	51	44	42	59	48	76	93	75	84	48	40	21	25	40	15
Fatalities in Intersection Crashes	388	383	378	382	375	379	361	363	368	368	339	291	280	267	270	294	246	271	251	-20
Fatalities in Signalized Intersection Crashes	131	107	114	125	134	122	106	109	102	112	114	103	82	90	87	86	82	80	86	6
Fatalities in Stop Controlled Intersection Crashes	213	222	224	216	191	165	176	158	155	143	130	113	128	87	104	108	99	105	89	-16
Fatalities in Running Red Light Crashes (any factor)	46	43	36	37	48	44	40	32	35	42	33	32	22	27	33	21	28	17	21	4
Fatalities in Crashes Involving a 65+ Year Old Driver	300	290	277	265	288	300	280	271	308	252	268	259	276	266	244	276	277	300	279	-21
Fatalities in Crashes Involving a 65-74 Year Old Driver	168	133	125	130	128	134	128	126	126	113	138	130	127	143	115	158	145	162	173	11
Fatalities in Crashes Involving a 75+ Year Old Driver	147	166	158	146	175	171	165	158	184	152	140	137	159	132	134	126	142	156	124	-32
Fatalities in Local Road (only) Crashes	268	248	244	253	290	163	227	232	238	268	279	235	197	220	213	203	182	200	233	33
Fatalities in Work Zone Crashes (all people)	16	19	27	27	22	26	35	16	31	20	26	23	23	21	21	21	16	24	23	-1
Fatalities in Crashes Involving a 16-17 Year Old Driver	133	124	122	84	95	97	120	92	89	68	101	64	40	57	66	44	27	37	35	-2
Fatalities in Crashes Involving a 16 Year Old Driver	61	53	60	24	33	32	50	22	27	18	25	20	12	19	29	7	7	9	9	0
Fatalities in Crashes Involving a 17 Year Old Driver	72	74	63	62	62	65	73	70	62	50	76	44	28	38	37	37	20	28	28	0
Fatalities in Drowsy/Asleep Driver Crashes	36	41	28	42	27	26	10	23	26	25	23	19	16	19	19	29	10	23	22	-1
Fatalities in Train/Vehicle Crashes	7	1	3	1	5	6	0	0	5	3	3	4	0	1	6	1	2	7	4	-3
Fatalities in Vehicle Failure Related Crashes (any factor)	59	33	33	36	23	49	63	75	93	69	72	72	76	70	69	54	48	54	69	15